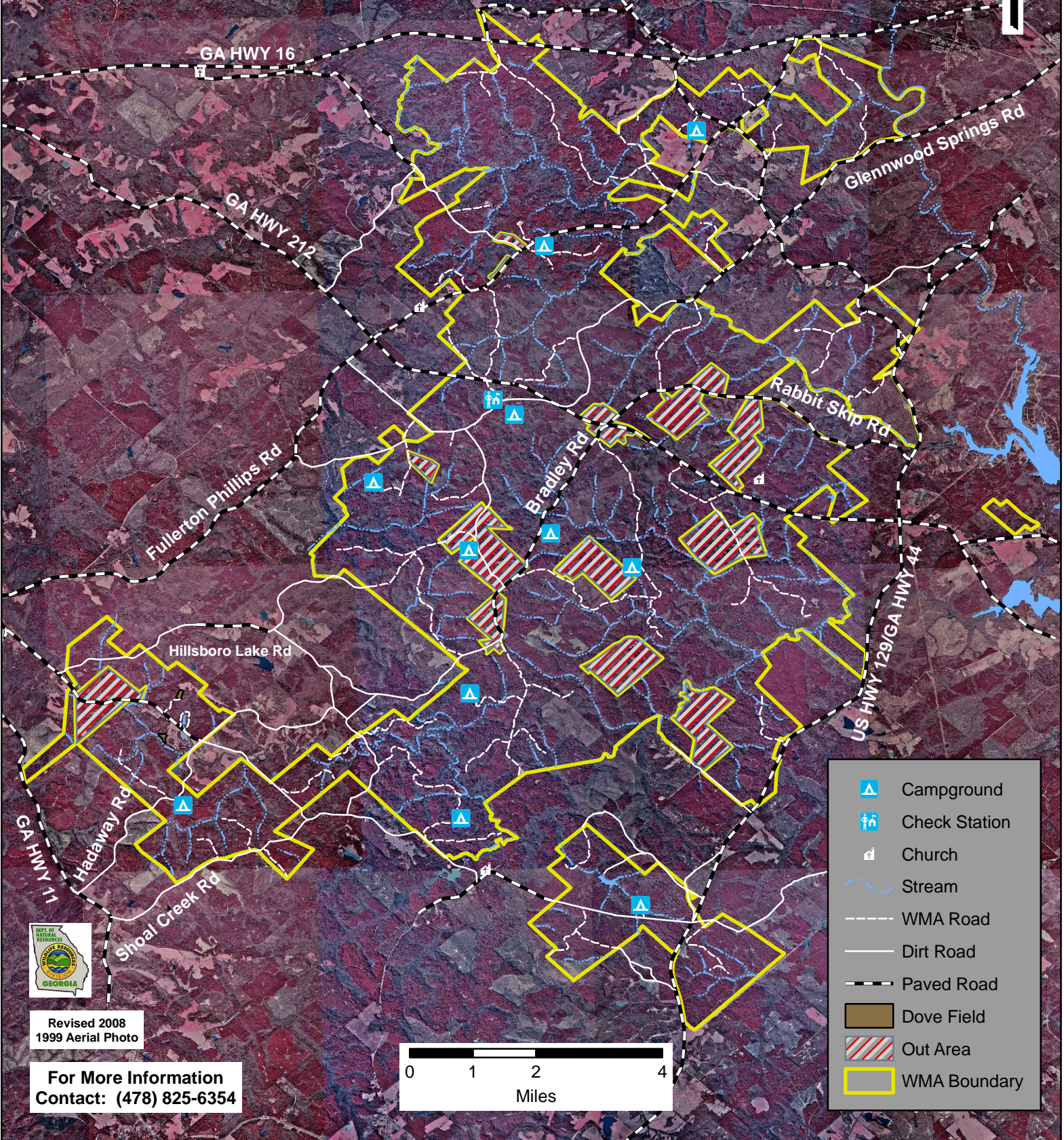


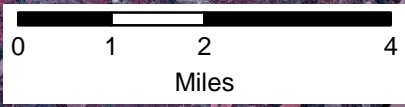
CEDAR CREEK WILDLIFE MANAGEMENT AREA

Jasper, Jones, & Putnam Counties (40,570 Acres)



Revised 2008
1999 Aerial Photo

For More Information
Contact: (478) 825-6354



- Campground
- Check Station
- Church
- Stream
- WMA Road
- Dirt Road
- Paved Road
- Dove Field
- Out Area
- WMA Boundary